

融  
風

風



志學知天

聖公會  
陳融中學

二零二四年  
五月號

地址：新界上水石湖墟智昌路六號 電話：2671 8989 傳真：2679 3399 網址：<https://www.skhcyss.edu.hk>

## Principal's Address

**Mr. Edward Mak**

This school year, we have introduced four new water dispensers for student use, and the tuck shop has signed a new service agreement with our school, agreeing to stop selling bottled water. This initiative aims to encourage students to develop the habit of bringing their own water bottles, reducing the consumption of packaged, bottled, and canned drinks, and ultimately minimizing plastic waste. These measures are aligned with the global push for sustainable practices advocated by governments worldwide.

Furthermore, recycling bins designated for the collection of aluminum cans, plastic bottles, and waste paper are now provided on the ground floor, with a waste paper recycling box on each floor. Students are taught to rinse and crush aluminum cans and plastic bottles before disposal, and to flatten waste paper and place it in the designated boxes.

In conjunction with these measures, our school will continue to strengthen environmental education through the Environmental Protection Ambassadors program and various activities, including environmental talks, visits to environmental facilities, and overseas study tours. We believe that these efforts will deepen students' understanding of the importance of environmental protection and inspire them to actively participate in environmental conservation.

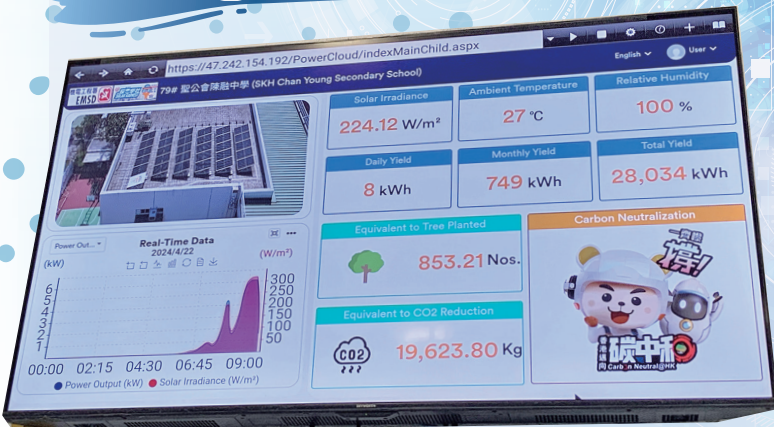


In addition to the legislation of Basic Law Article 23, the government policies that are of greatest concern to the public this year are the implementation of new regulations on disposable plastic products, set to begin in April, and the postponed garbage levy measures, scheduled for August.

While the government is actively working to reduce waste production, our school is taking a proactive approach to strengthening environmental education, with the goal of instilling a greater sense of environmental responsibility in our students and creating a sustainable "green campus."

Two years ago, our school participated in the "Green Campus 2.0" project, which included the "Solar Harvest" and "Energy Smart" programs. The solar power systems installed in the "Solar Harvest" program have generated over \$170,000 in income through the CLP Company's feed-in tariff plan, providing our school with additional funds for purchasing facilities and services that support environmental education. As part of the "Energy Smart" program, we replaced inefficient air conditioners with energy-efficient variable frequency ones and conventional fluorescent tubes with energy-saving LED lights.

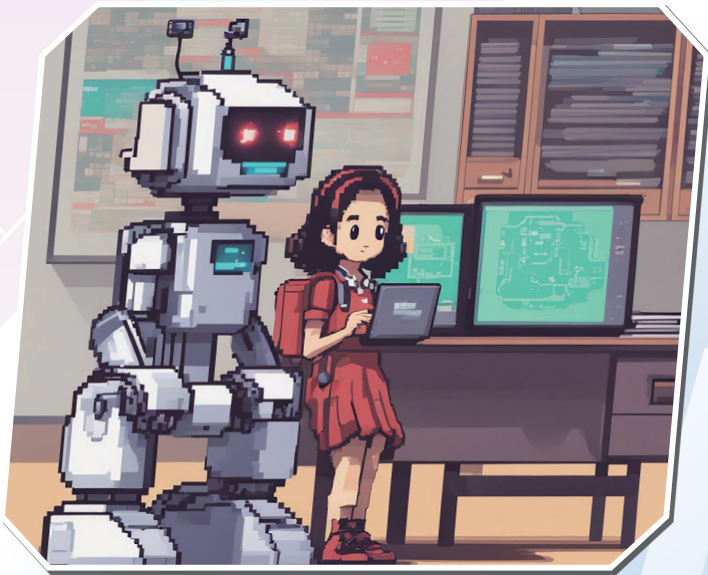
To monitor electricity consumption on our campus, we have introduced a real-time smart energy-monitoring system. The school hall is the first location where the operation of electrical appliances can be programmed, and energy consumption is closely monitored. This information empowers students to take action and actively participate in reducing carbon emissions.



# Unlock the Power of AI in English Learning



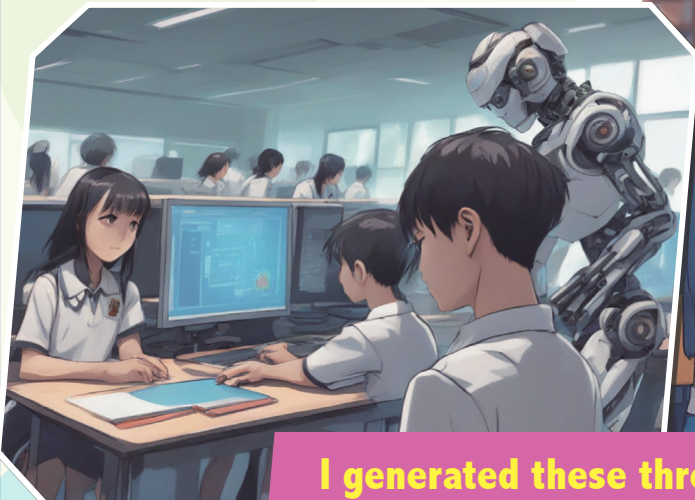
## Betty Leung (Native English Teacher)



Are you ready to take your English skills to the next level? Imagine having a personal language coach that's always available, always patient, and always ready to help. Welcome to the world of AI-powered English learning! With AI by your side, learning English becomes a fun and interactive adventure. You'll get to explore new tools, practice with virtual friends, and unleash your creativity like never before. Let's dive into the exciting possibilities that await you!

### 1. Chatbots Classic: Poe.com

Ever wished you could practice your English with native speakers without leaving your room? Poe.com's chatbots are here to make your dream a reality! These virtual friends can simulate real-life conversations, allowing you to practice English in various situations. Whether you're ordering food at a restaurant or chatting about your hobbies, these AI-powered pals will help you build fluency and confidence while correcting your mistakes and introducing you to new vocabulary.



### 2. Learning Tools Galore: Magicschool.ai

Magic School AI is your one-stop shop for all things English learning! This incredible platform offers a treasure trove of interactive tools designed to make your learning journey fun and effective. Get valuable feedback on your writing, generate creative writing ideas, and even engage in simulated debates to sharpen your critical thinking skills. With Magic School AI, you'll never run out of inspiration or opportunities to improve your English.

### 3. Bring Words to Life with Image Generators: mage.space

Imagine learning about animals, historical landmarks, or scientific concepts and instantly visualising them in stunning detail. Mage.space's image generators make it possible! These AI tools create vivid and artistic images that help you understand word meanings more effectively, stimulate your imagination, and make learning more engaging.

You're lucky to be living in an era where AI technology is revolutionising English learning. The opportunities are endless, and the possibilities are limitless. So, what are you waiting for? Start your language adventure today, and discover the power of AI in English learning!



I generated these three images with mage.space!

# 堂校合作

劉致滔老師

今年一月二十一日（顯現期第三主日），校監、校長和老師及學生侍從團出席香港聖公會聖智堂 30 週年堂慶感恩聖餐崇拜暨堅信禮。當天，本人代表學校持校旗進堂，鄒校監和麥校長擔任讀經員，一同領受靈糧，共沐主恩，見證聖堂在上主恩典下茁壯成長。

聖智堂與本校關係密不可分。教會為了回應新市鎮的發展以至靈性關顧需要，先在一九八九年開辦本校，並於一九九四年一月二十三日（顯現期第三主日）在校內開展聖工，由石詠雪牧師開始聖智堂第一次崇拜，時任鄧慶年校長則被委任為平信徒主理。

多年來，聖智堂與本校合作無間。聖智堂主理牧師為本校的校董及校牧，其青少年事工幹事則為本校的助理校牧，除了恆常每周在早會帶領祈禱、分享信息及參與本校的學生基督徒團契，更為中一入學的同學舉辦信仰暑期班，為有志慕道者舉辦初中啟發課程。此外，聖智堂亦協助籌辦宗教周，包括舉行講座、泰澤祈禱會等，鼓勵學生回應基督的訓導。再者，聖智堂一直為師生提供聖公宗傳統的基督徒群體生活模式，藉禮儀崇拜顯出基督徒倫理。在聖智堂的支持下，去年本校正式成立侍從團，令學生有機會發展才華、培養領導才能、服務他人、事奉上主。

未來，聖智堂與本校將繼續以聖經教導為基礎，在發展學生個人倫理中強調基督徒價值，並和社會機構合作，積極推廣服務社群文化，並反省基督教信仰。



# 韓國文化交流團接待

謝蕊如老師

本校於今年一月與香港青年協會合作，接待 LABO Language Laboratory 的韓國文化交流團。這次活動對我校學生來說，既是難能可貴的體驗，也是疫情後再開展國際交流的里程碑。

12 位來自韓國的同學蒞臨本校後隨即欣賞由學生會主辦的午間才藝精彩表演，與一百多位同學一同樂在其中。其後他們又積極參與我校不同年級的課堂，感受香港中學生的上課體驗。

這次交流活動在本校引起極大迴響，各位同學熱情展示才華及好客精神。例如：修讀旅遊和款待科的同学在交流會中與韓國同學分享中國新年的傳統習俗，而本校舞蹈隊則為韓國同學帶來中國傳統舞蹈表演。當日，不論我校同學還是韓國同學均主動積極與對方交流，場面溫馨，其樂融融。

翌日，我校舉辦寄宿家庭活動，讓韓國同學進一步加深文化體驗。我們由衷感激各位家長慷慨提供寄宿，讓韓國學生和我校學生有幸共度這難忘的一天。

這次訪問不但促進學校社區內的聯繫，亦開拓同學的國際視野。我們非常榮幸能有這難得的機會與來自韓國的同學交流，期望未來有更多的國際交流機會。



# 新加坡四天旅遊與款待及文化考察遊學團

施富強老師

為加強同學對全球旅遊業持續發展的了解，旅遊與款待科於今年四月舉辦為期四日三夜的新加坡遊學團。

這次遊學團為同學提供難得的學習機會：參與由新加坡酒店協會所舉辦的半天課程、與當地行內人士交流，了解全球旅遊及酒店業的前景。更有幸參觀國際知名酒店品牌 Accor 旗下的 Mercure Singapore Tyrwhitt 酒店，同學在酒店員工的指導下，了解應對國際級優質客戶的理論及技巧。我們衷心感謝上述機構給予機會，讓同學們透過實地考察，培養專業素養和良好社交能力。

此外，本團還融入多元文化及旅遊業可持續發展的議題。透過參觀象徵性的地標如牛車水、小印度、甘榜格南等，同學在親身體驗新加坡多元文化的同時，亦明白彼此包容方能令文化融合及壯大的道理。而透過參觀星耀樟宜機場及濱海灣花園，同學可明白發展旅遊業的同時，環境保育同樣重要。

這次學習之旅不僅拓寬學生的視野，還培養他們對旅遊與酒店行業的熱情，為將來投身相關行業作出積極的準備。



# 同根同心——韶關丹霞山的地質地貌及生態保育交流團

許家尉老師

本校地理科及生物科於復活節假期期間帶同四十位初中同學參與由教育局舉辦的「同根同心——韶關丹霞山的地質地貌及生態保育」交流團。

韶關市位於中國廣東省北部，擁有豐富的地質、礦物資源，同時擁有物種多樣性的特色。當中丹霞山是中國國家級自然保護區、國家重點風景名勝區、國家地質公園，同時被聯合國教科文組織評為首批世界地質公園，因此擁有「丹霞地貌」之稱。

同學走訪丹霞山，見識奇特的地貌結構：如陽元石、天生橋、睡美人、曬布岩、龍鱗石及錦石岩等。當地的沉積岩因含有豐富的鐵礦物質而呈紅色的外貌，因而有「赤壁丹崖」的美譽。

除了地形特點外，風景區還擁有豐富的生態資源。當中有常見的紅嘴藍鵲及多種不同的植物，如紅豆杉、樟樹、杜鵑花、銀杏及蘭花等。是次交流團讓同學更深入認識國家資源，以及當地政府致力保育生物多樣性所作出的努力及貢獻。

